



AARHUS UNIVERSITY



# Hvad er målsætningen med behandlingen af patienter med svær psoriasis?

**Lars Iversen MD, DMSc.  
Professor  
Dermatologisk afdeling  
Aarhus Universitetshospital**

# Disclosures

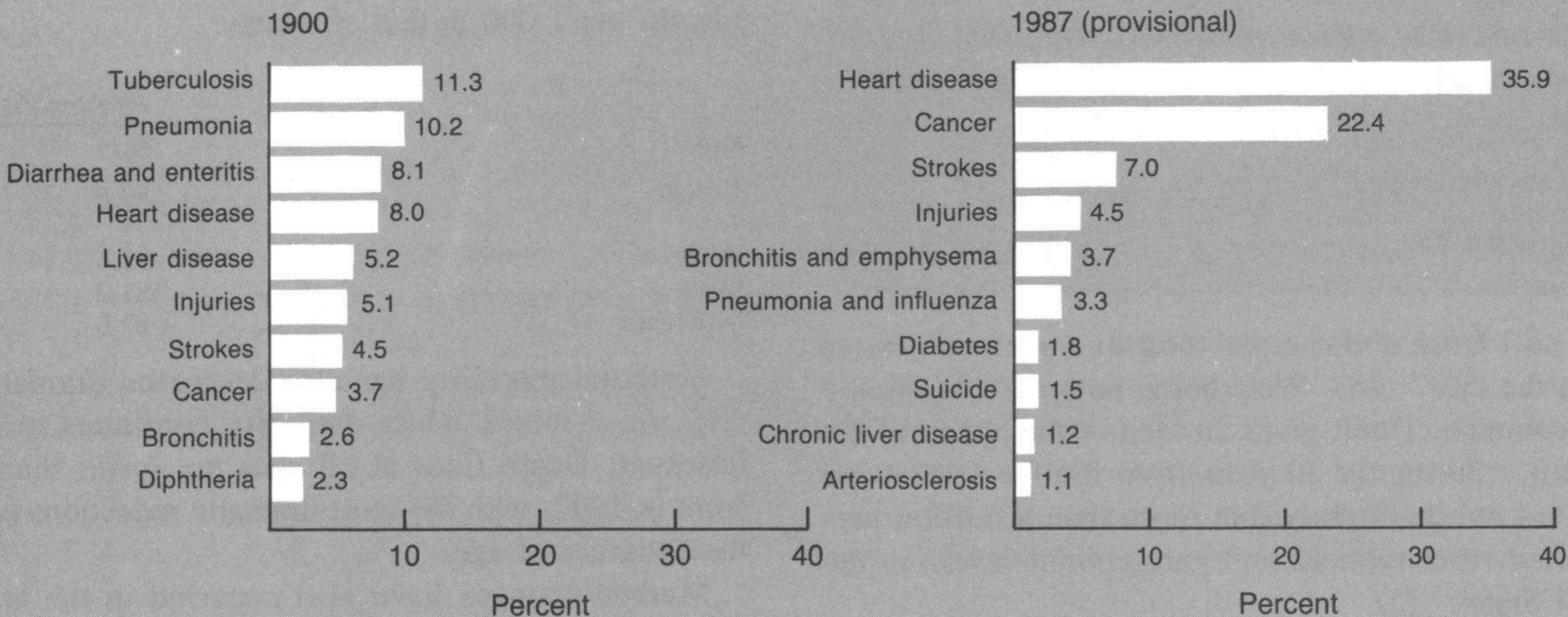
---

Served as a consultant and/or paid speaker for and/or participated in clinical trials sponsored by:

- Abbvie
- Almirall
- Amgen
- BMS
- Boehringer Ingelheim
- Celgene
- Centocor
- Eli Lilly
- Janssen Cilag
- Leo Pharma
- MSD
- Novartis
- Pfizer
- Samsung
- UCB

# THE 10 LEADING CAUSES OF DEATH

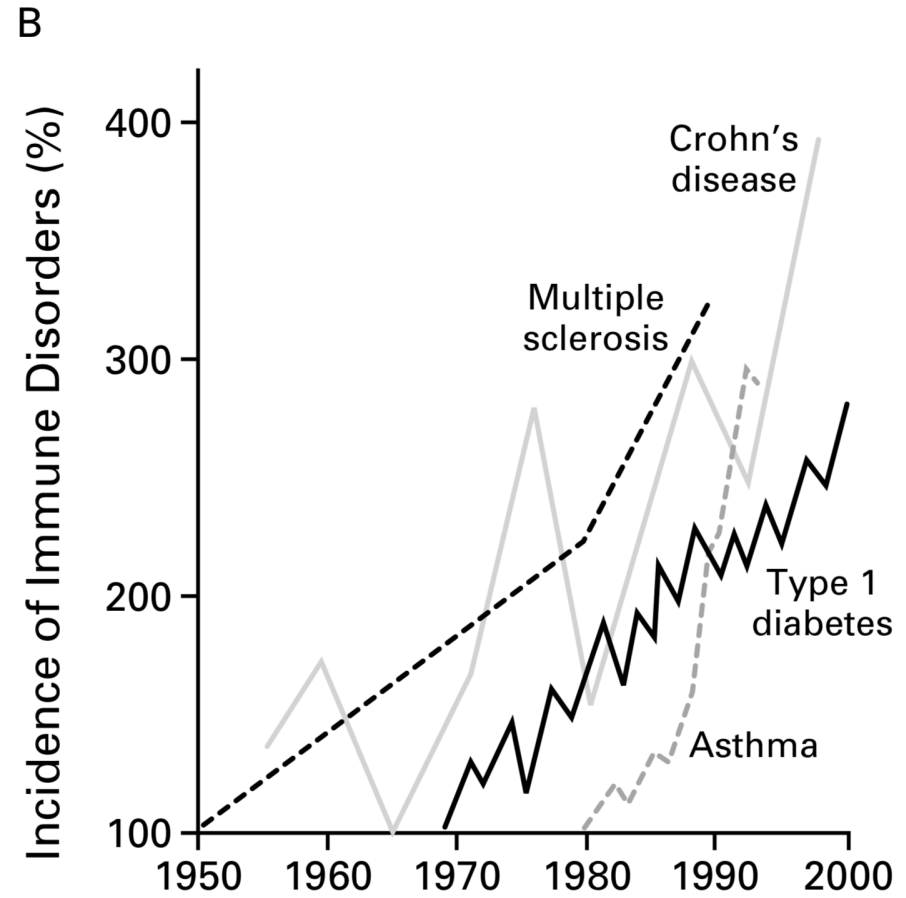
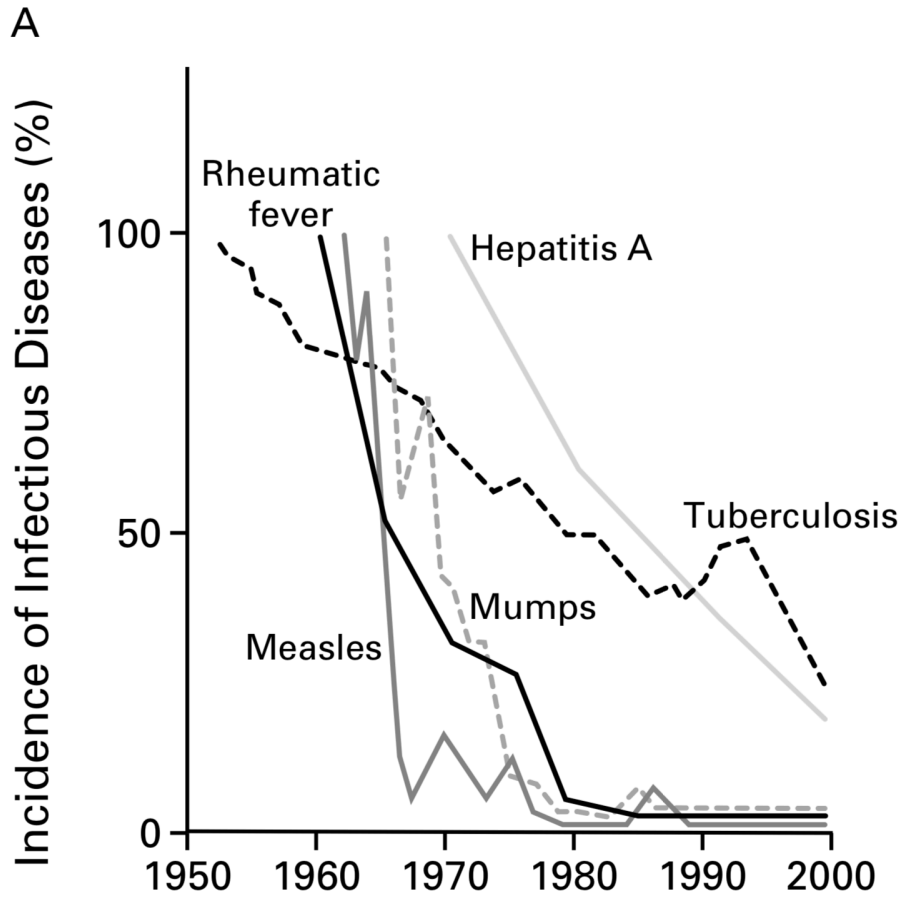
## PERCENTAGE OF ALL DEATHS, U.S. 1900 AND 1987



# Life expectancy, 1900 and 1987

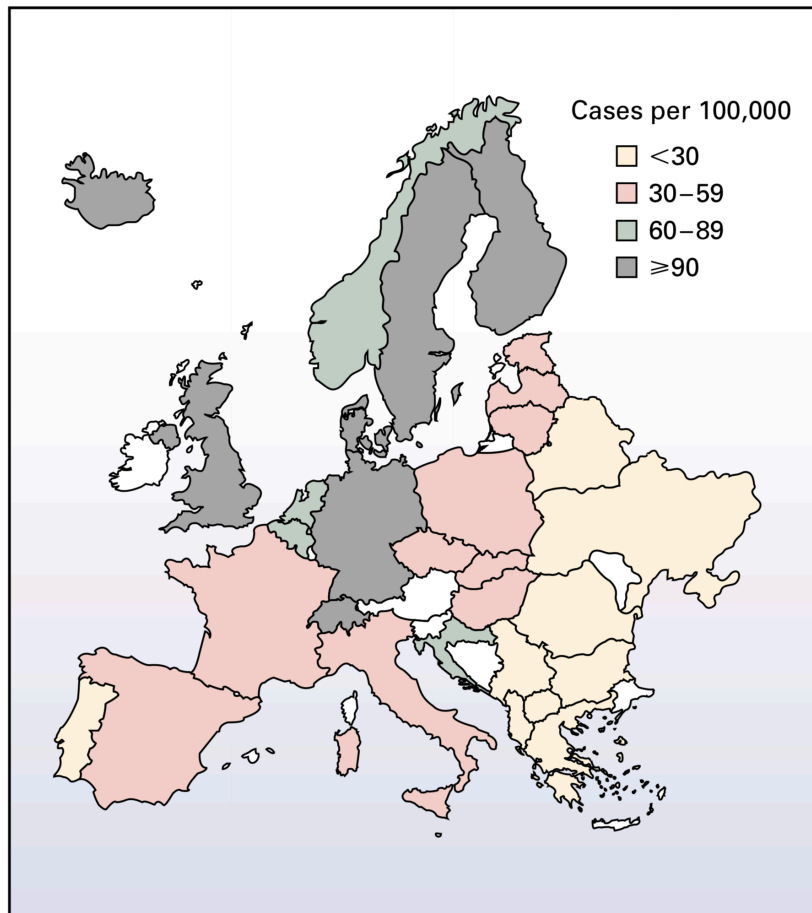
<i>Sex and race</i>	<i>Life expectancy</i>		<i>Difference</i>
	<i>1900</i>	<i>1987</i>	
<b>Male:</b>			
White .....	46.6 years	72.1	+ 25.5
Black .....	32.5	65.4	+ 32.9
Difference .....	- 14.1	- 6.7	...
<b>Female:</b>			
White .....	48.7	78.8	+ 30.1
Black .....	33.5	73.8	+ 40.3
Difference .....	- 15.2	- 5.0	...

# Inverse Relation between the Incidence of Prototypical Infectious Diseases and the Incidence of Immune Disorders

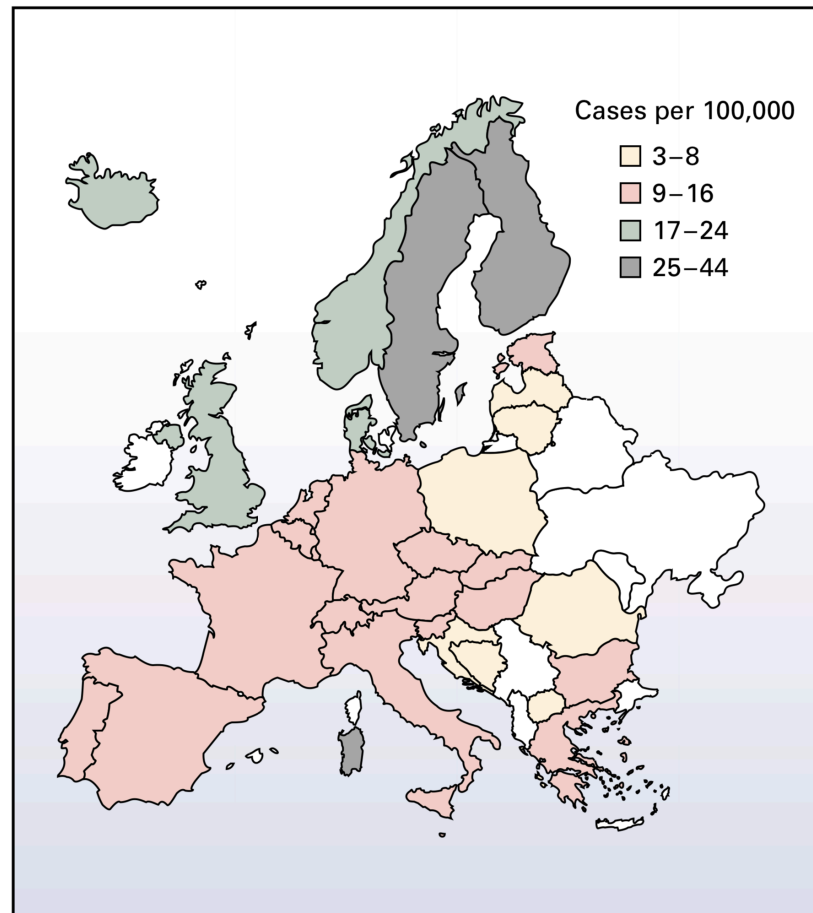


# The North–South Gradient in the Prevalence of Multiple Sclerosis and Type 1 Diabetes Mellitus

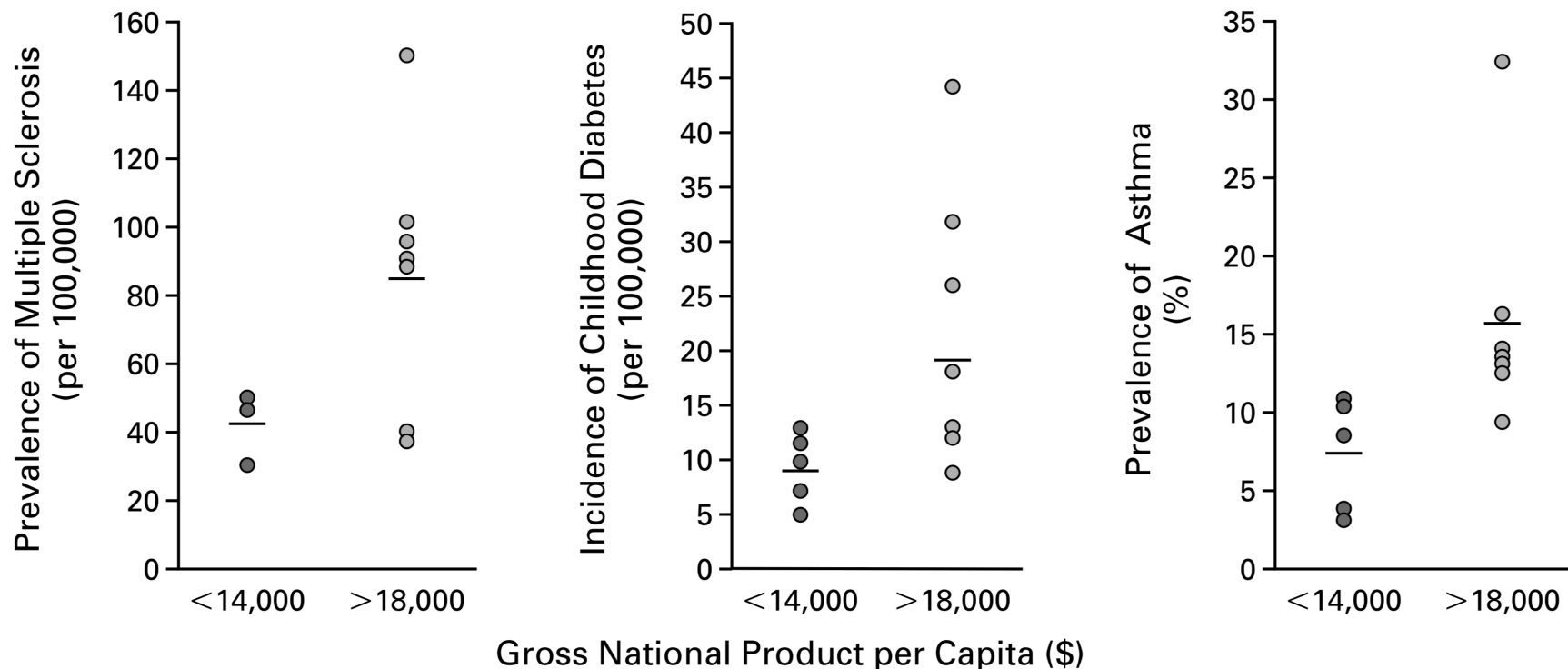
A Prevalence of Multiple Sclerosis



B Incidence of Type 1 Diabetes in Children

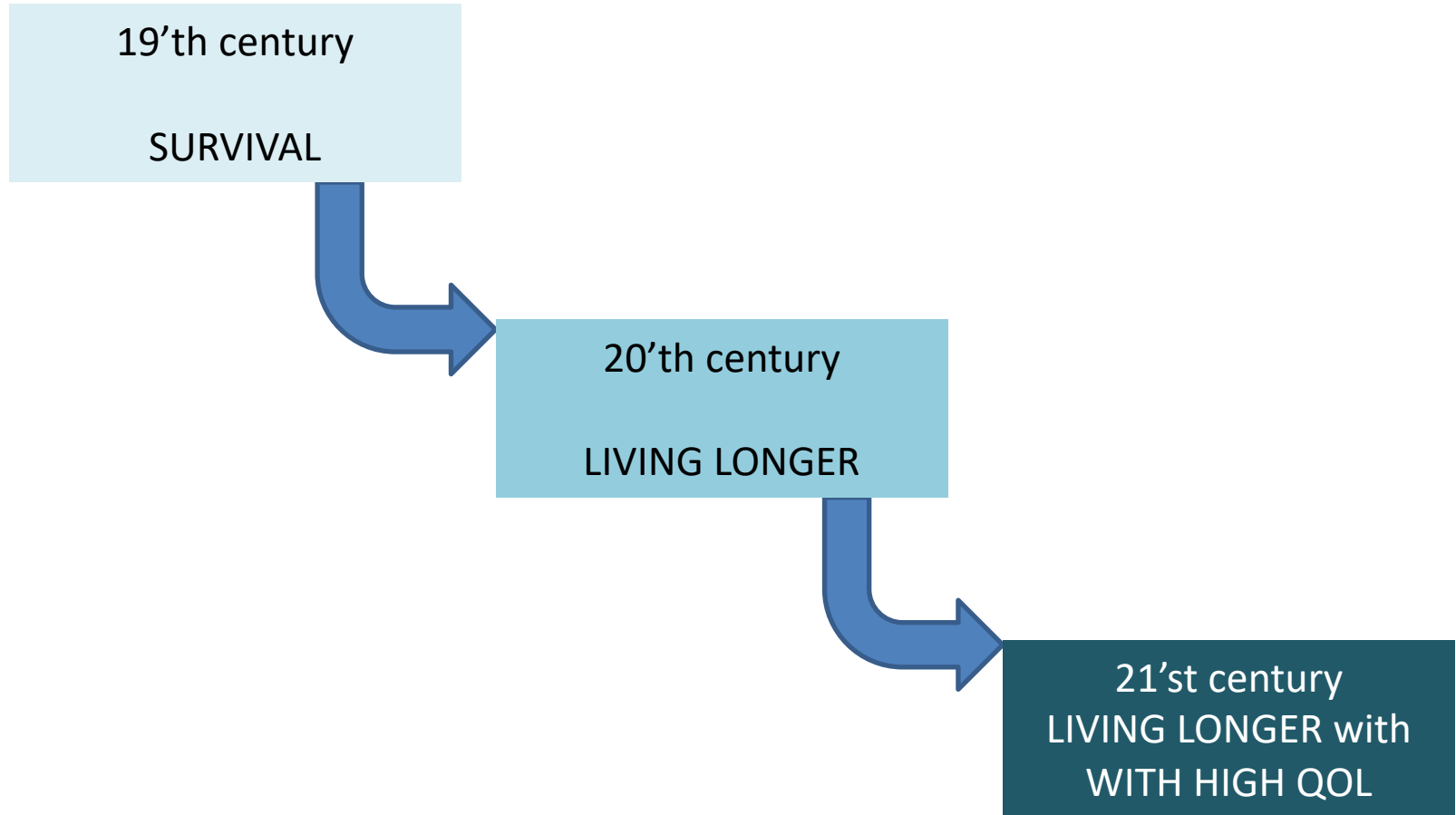


# The Frequency of Multiple Sclerosis, Type 1 Diabetes Mellitus, and Asthma in 12 European Countries



# Patient expectancy

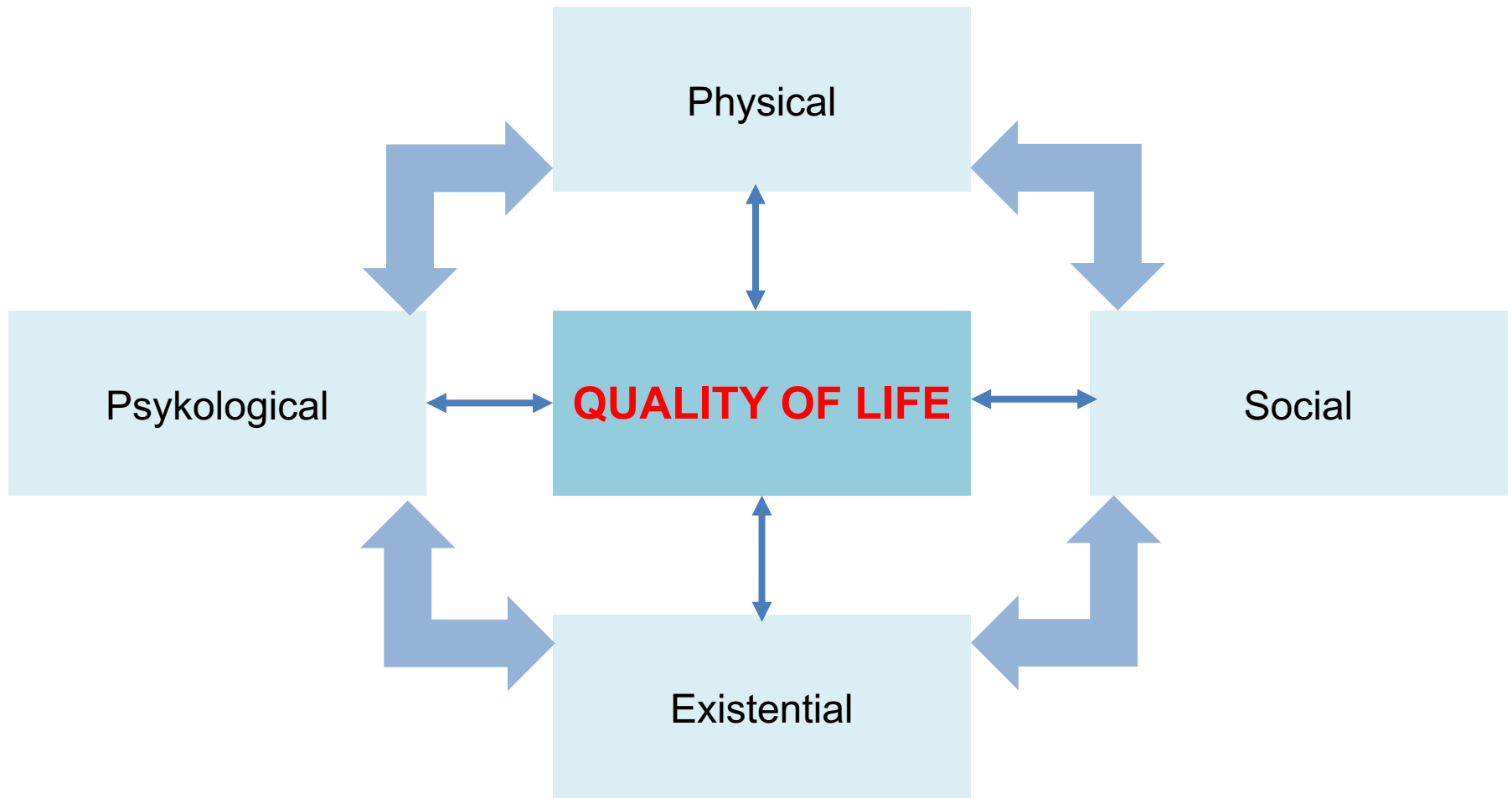
---

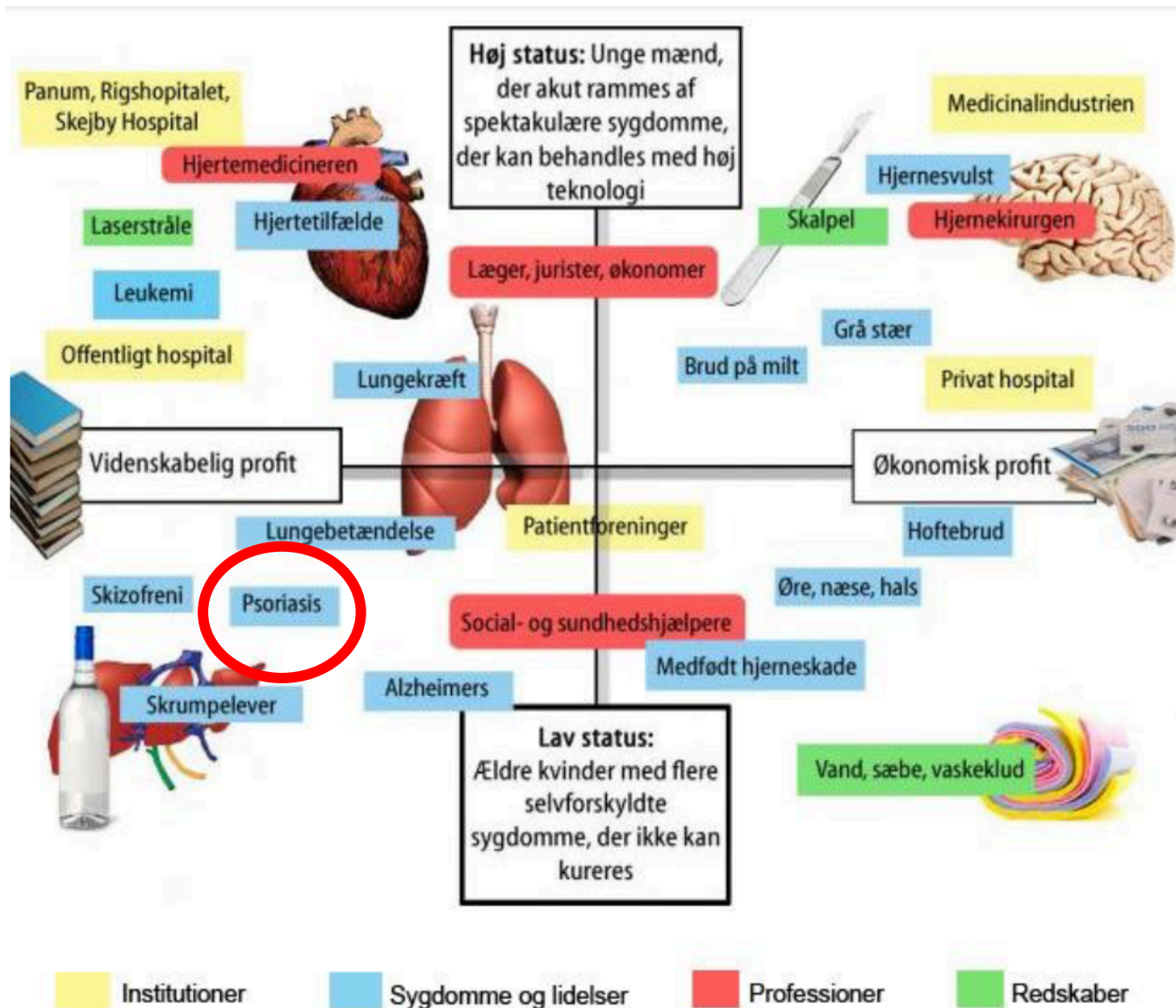




# Patient expectancy

---





Principskitse over sygdommenes hierarki med inspiration fra Kristian Larsen. (Ill.: Colourbox og Anders Boas)

# Bøger og skalpel i hver sit ringhjørne

Modsætningen blev tydelig for Kristian Larsen under hans feltarbejde på hospitalerne:

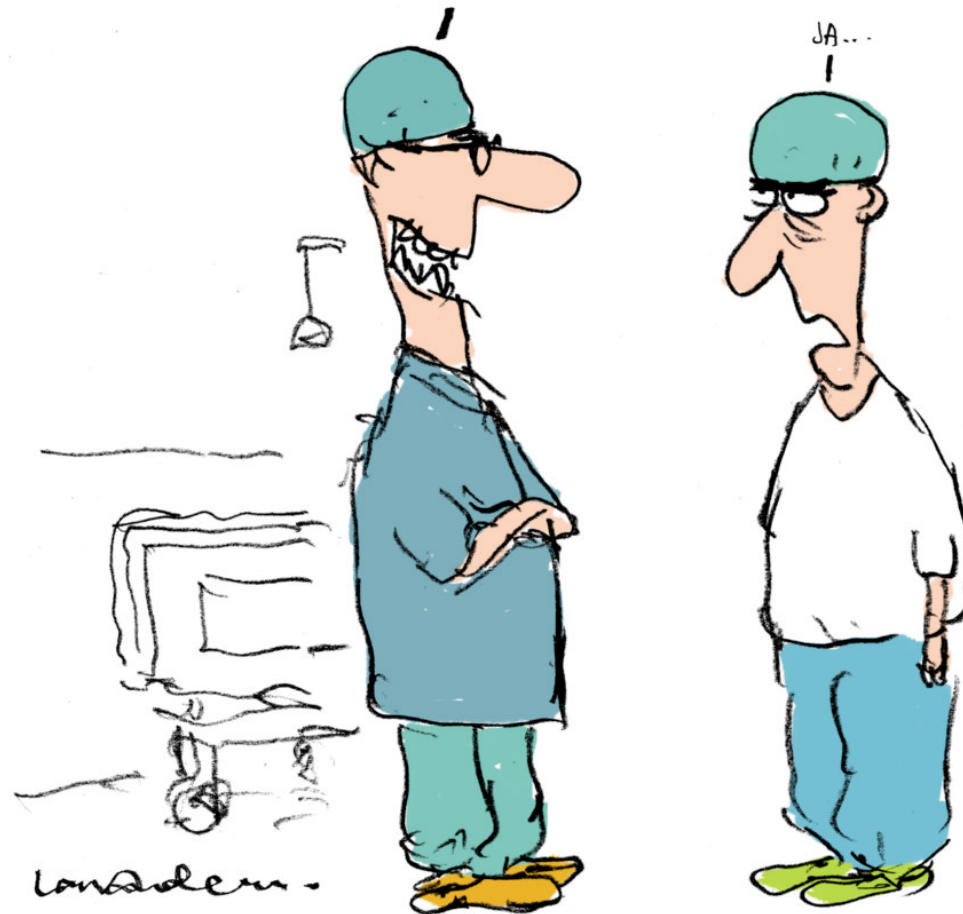
»Kirurgerne har deres hellige rum - operationsstuen - hvor de opererer og redder liv. De tjener statistisk set mere end medicinerne, og deres arbejde kan meget lettere gøres op i kroner og øre. Jo mere man nærmer sig det økonomiske ringhjørne, jo mere er det værdier fra det private sygehusvæsen og medicinalindustrien dominerer.

Medicinerne har derimod deres hellige rum ved den timelange konference, hvor de jagter diagnoser

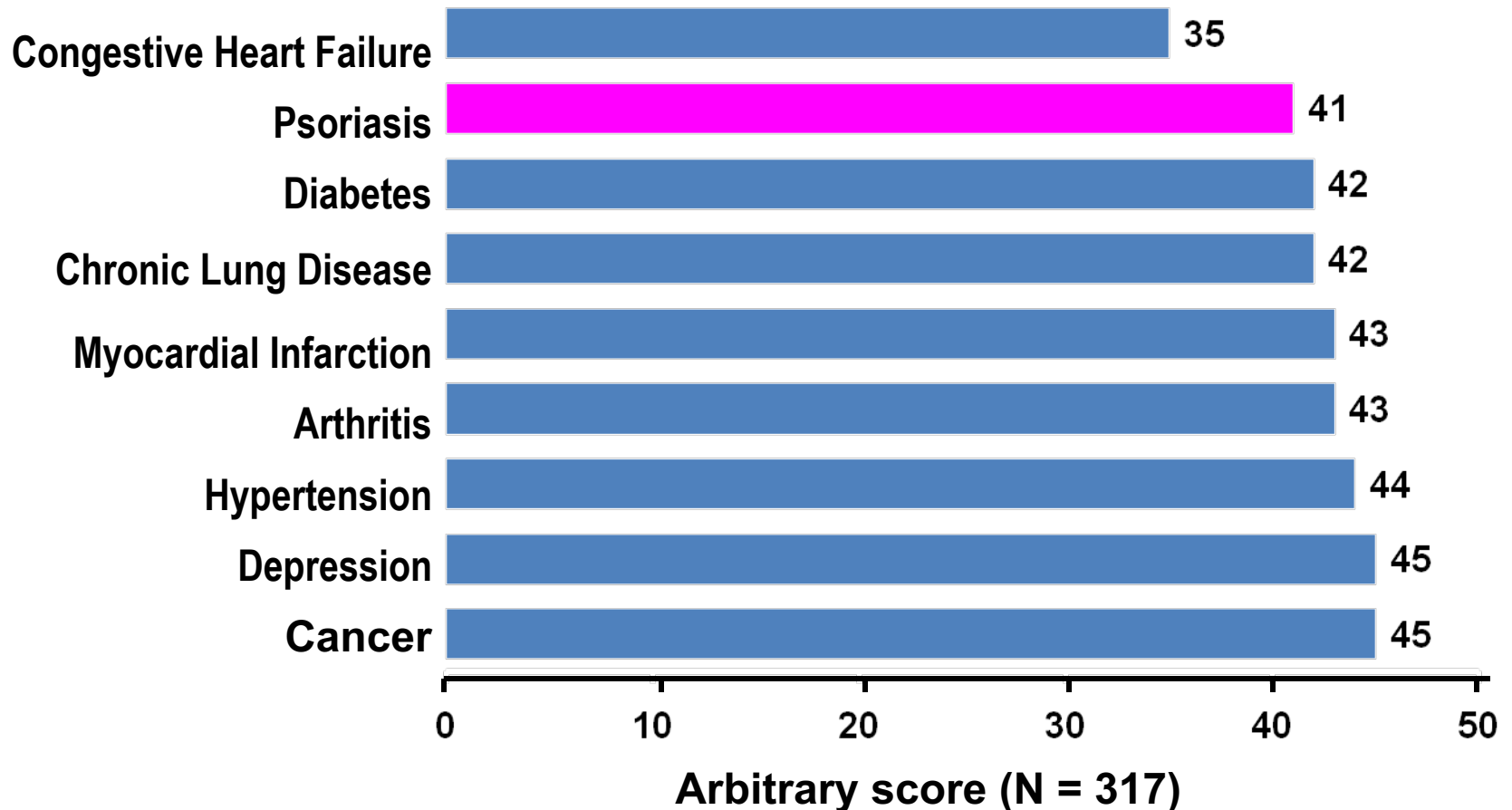
Kristian Larsen, er professor ved Højskolen i Oslo og Akershus i Norge og lektor ved Institut for Uddannelse og Pædagogik ved Aarhus Universitet.

# Prestige

JA, JEG KNOKLER JO PÅ  
MED BLODPROPPER I  
HJERNEN! ER DU STADIG  
FODKIRURG?

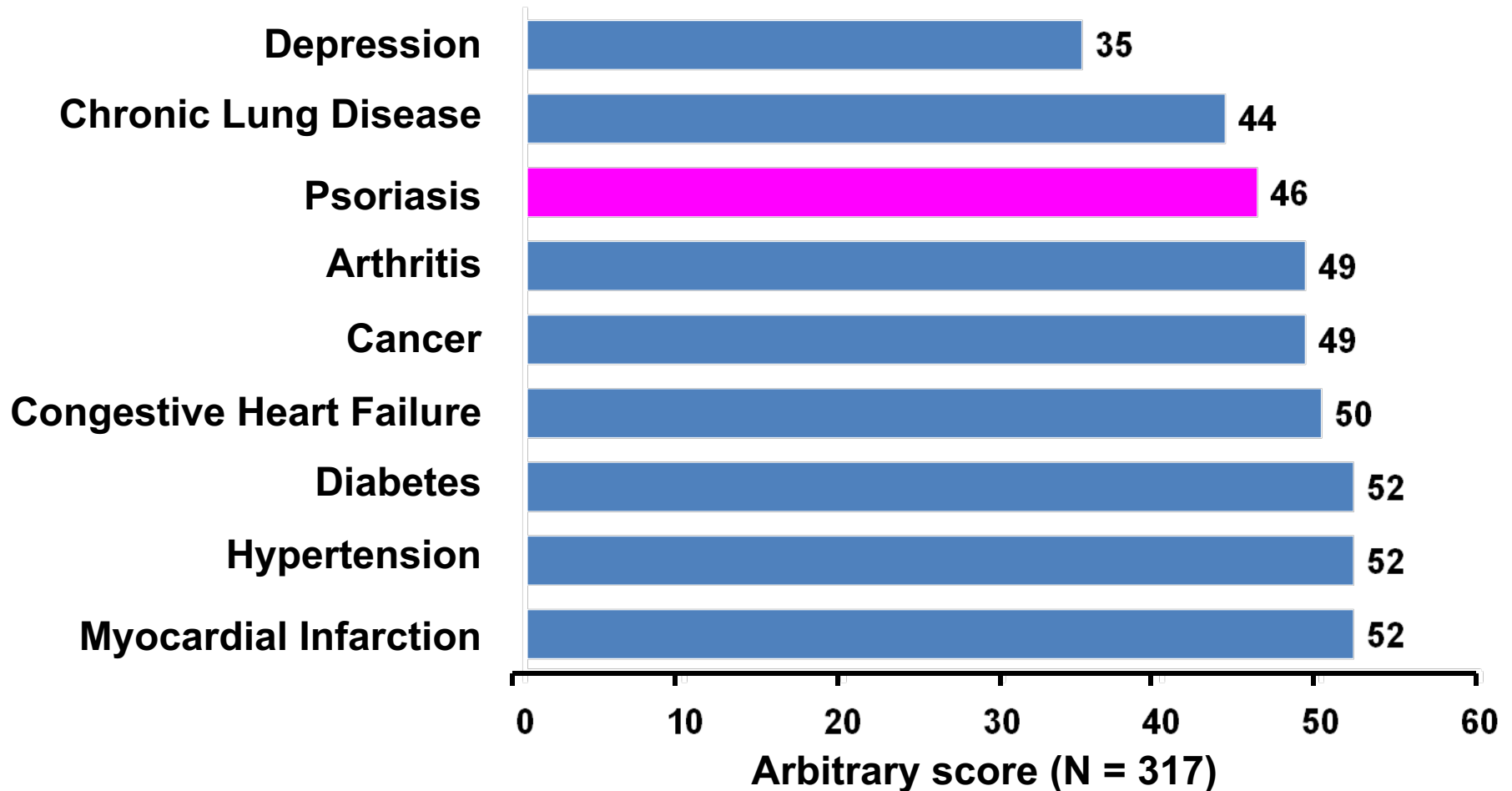


# The impact of psoriasis on patient-reported physical well-being



**Low score represents a bad physical outcome rating**

# The impact of psoriasis on patient-reported psychological well-being



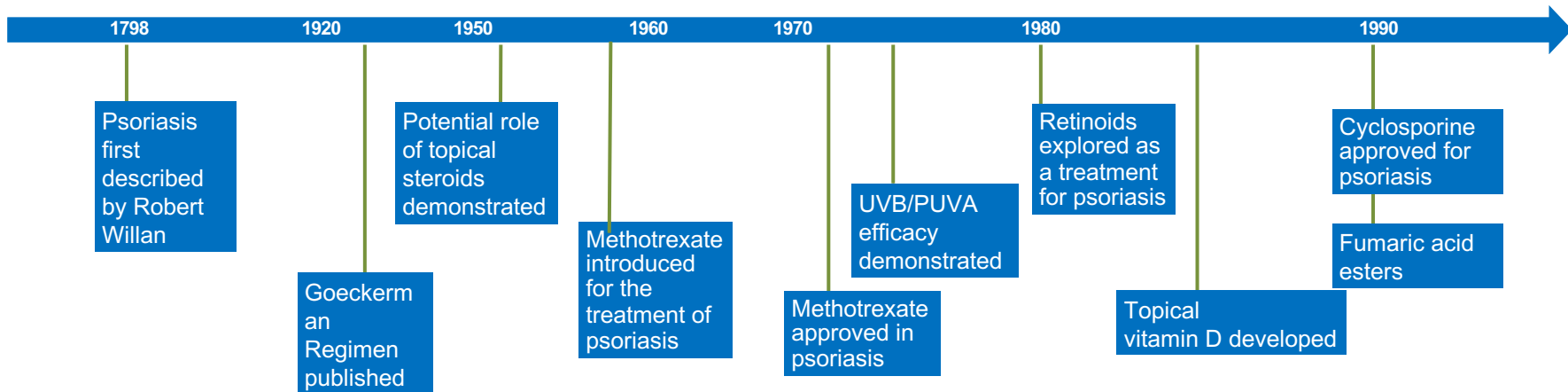
**Low score represents a bad mental outcome rating**

# Prioritering

---



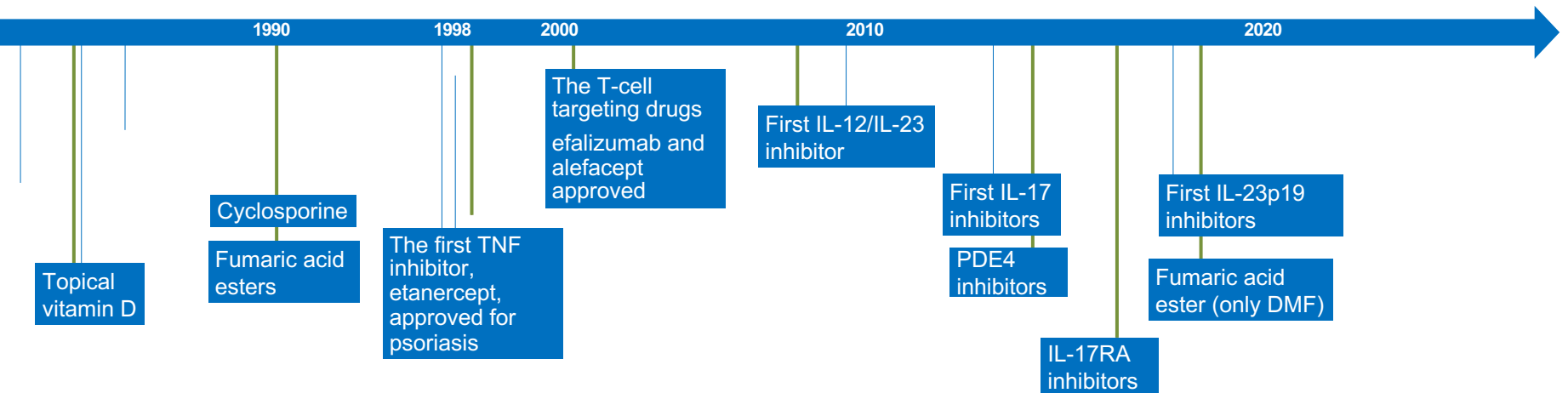
# Advances in the treatment of psoriasis



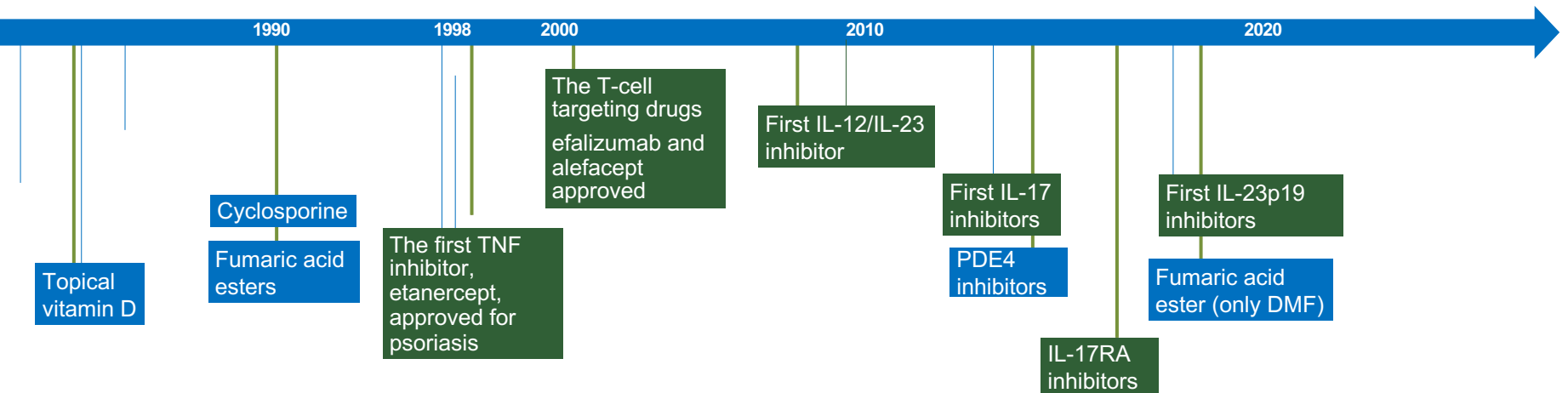
Booth, C. *J R Soc Med.* 1999;92:313–18; El-Darouti MA, et al. *Acta Dermatovenerol Croat.* 2015;23:165–70; Mahoney JF, et al. *Amer J Pub Health* 1943;33:1387–91; Baker H. *J Royal Soc Med.* 1984;77:537–9; National Psoriasis Foundation, *Systemic Medications*, 2015; Gottlieb AB. *J Am Acad Dermatol.* 2005;53:S3–S16;



# Advances in the treatment of psoriasis



# Advances in the treatment of psoriasis



# Treatment Goals

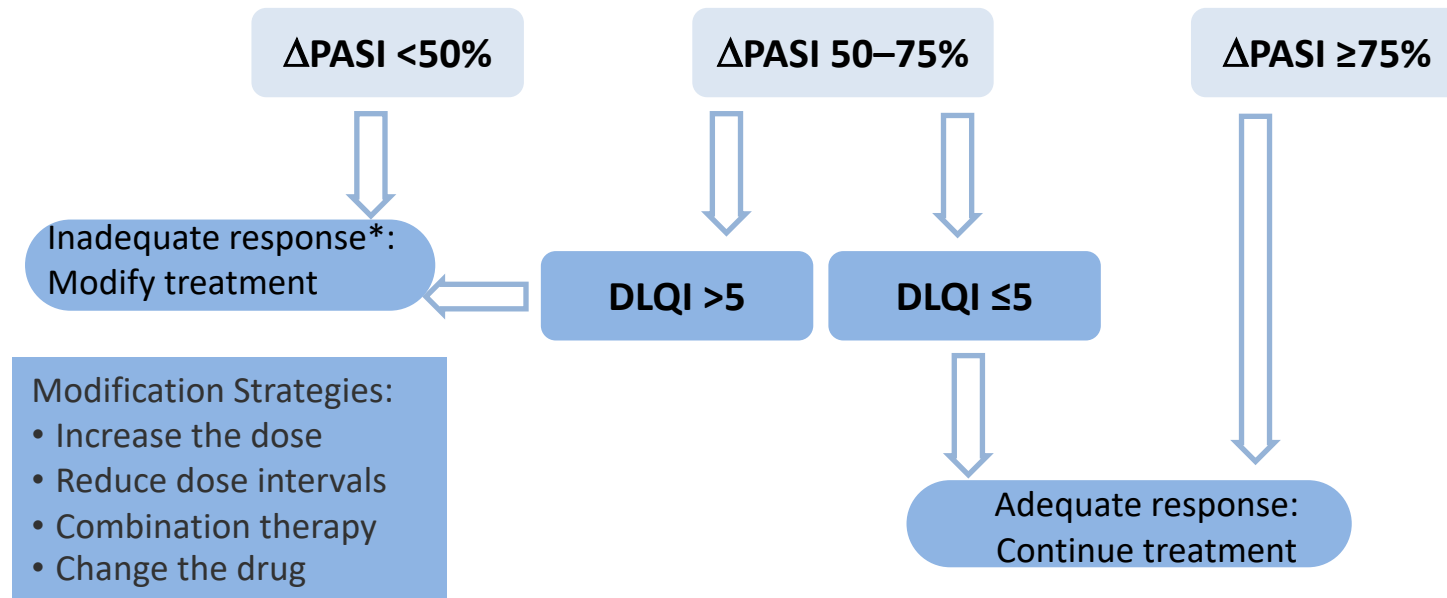
---

## Purposes of treatment goals

- Assessment of effective treatment/management
- Definition of cut-offs to prevent uncontrolled disease
  - HbA1c in diabetes
  - Hypertension
  - Cholesterol

# Treatment goals 2011

Clear skin and increased quality of life are important to patients and both are reflected in current treatment goals:



$\Delta$ PASI, improvement from baseline

\*There is no established definition of inadequate response. In published clinical trials with anti-TNFs, primary non-response was defined as *not* achieving PASI 50

REVIEW ARTICLE

**PASI90 response: the new standard in therapeutic efficacy for psoriasis**

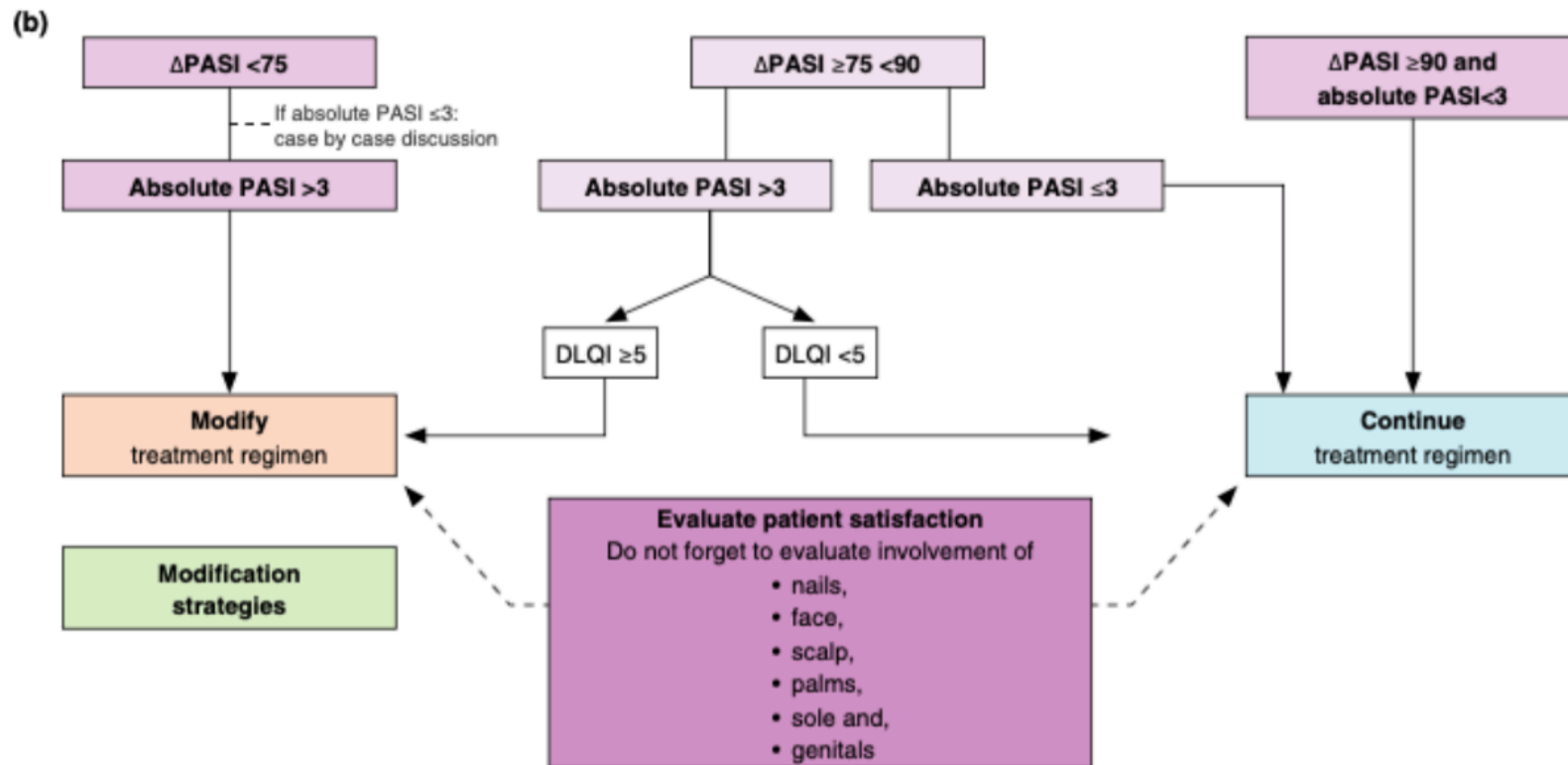
L. Puig\*

Department of Dermatology, Hospital de la Santa Creu i Sant Pau, Universitat Autònoma de Barcelona, Barcelona, Catalonia, Spain

\*Correspondence: L. Puig. E-mail: [lpuig@santpau.cat](mailto:lpuig@santpau.cat)

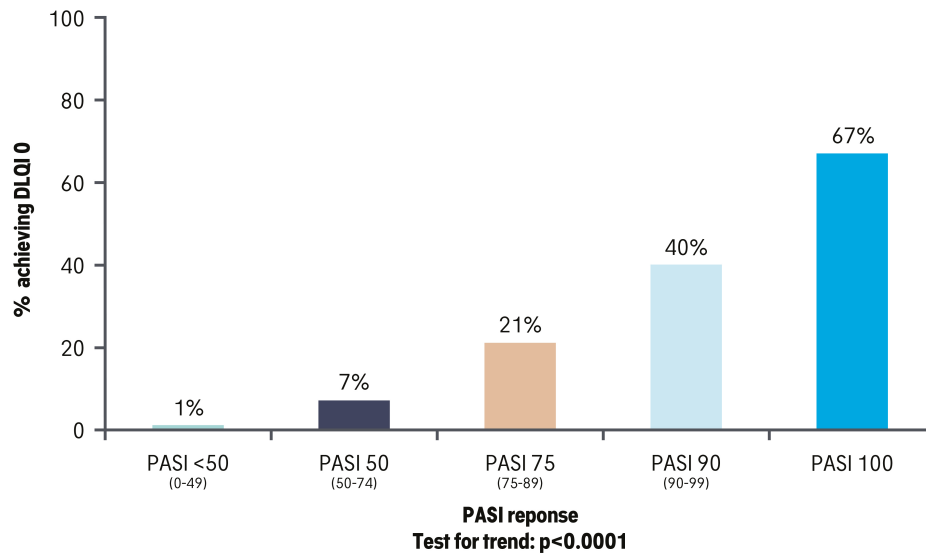
2014

# French treatment goals 2019



# Quality of life correlates strongly with PASI

## DLQI 0 and PASI response

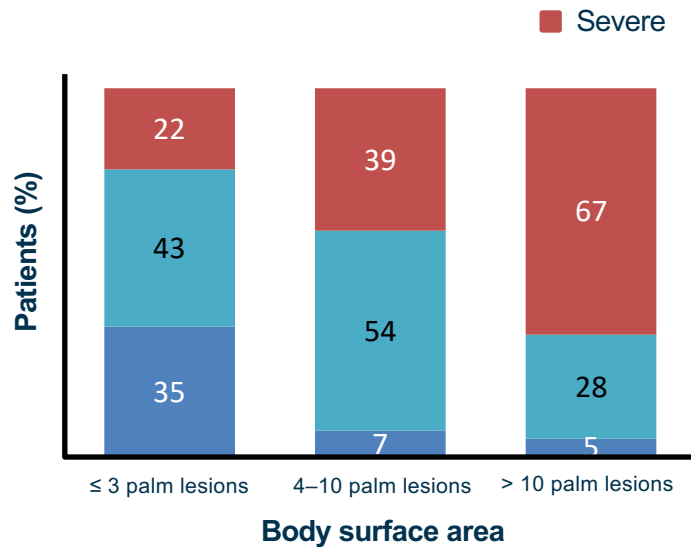


- The association between DLQI 0 and PASI response was analysed based on pooled data on 4373 patients from AMAGINE-1, -2 and -3<sup>a</sup>
- Achieving DLQI 0 is positively correlated with PASI response:
  - 1% with PASI response <50 achieve DLQI 0
  - 7% with PASI  $\geq 50$  to <75
  - 21% with PASI  $\geq 75$  to <90
  - 40% with PASI  $\geq 90$  to <100
  - 67% with PASI 100(test for trend:  $p < 0.0001$ )

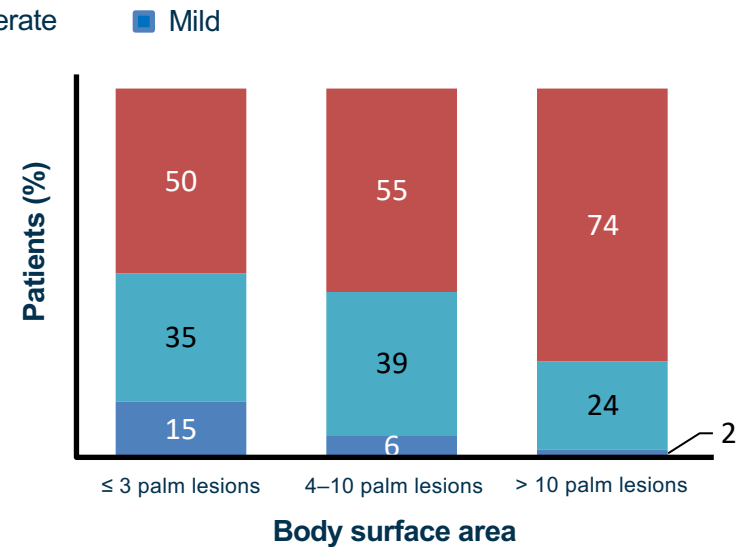
<sup>a</sup>Including data from all treatment groups and all available visits

# Self-perceived disease severity by patients with psoriasis and PsA

Patients' self-reported disease severity in psoriasis



Patients' self-reported disease severity in PsA



• PsA, psoriatic arthritis.

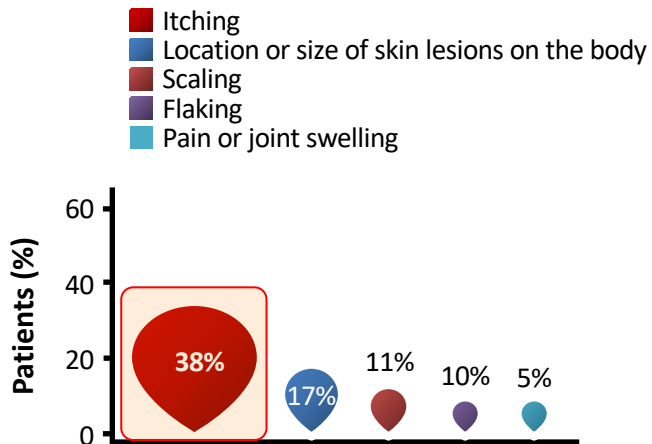
• Lebwohl M, et al. J Am Acad Dermatol 2014; 70:871–881.



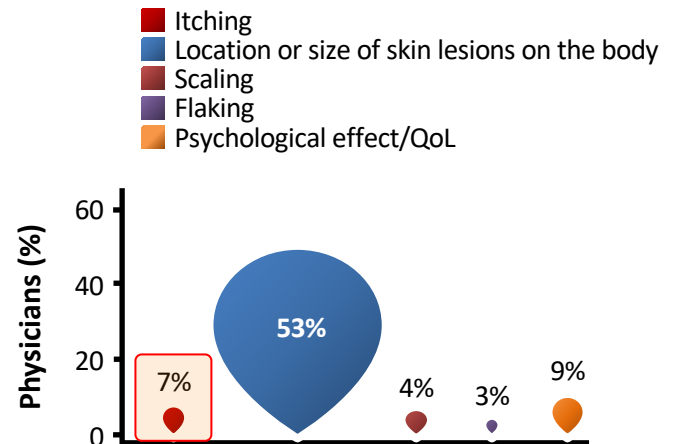
# Difference in perception – symptoms contributing most to disease severity

Patients with psoriasis consider itch as the most important factor contributing to disease severity, whereas physicians consider location or size of lesions as more important<sup>1,2</sup>

## Patient perspective<sup>1,2</sup>



## Physician perspective<sup>2</sup>



# Psoriasis – mere end en hudsygdom

---

# Er inflammation den nye sygdomsepidemi?

Stress, overvægt og dårlig kost kan udløse vedvarende inflammation, som igen kan føre til hjertesygdomme og depression.

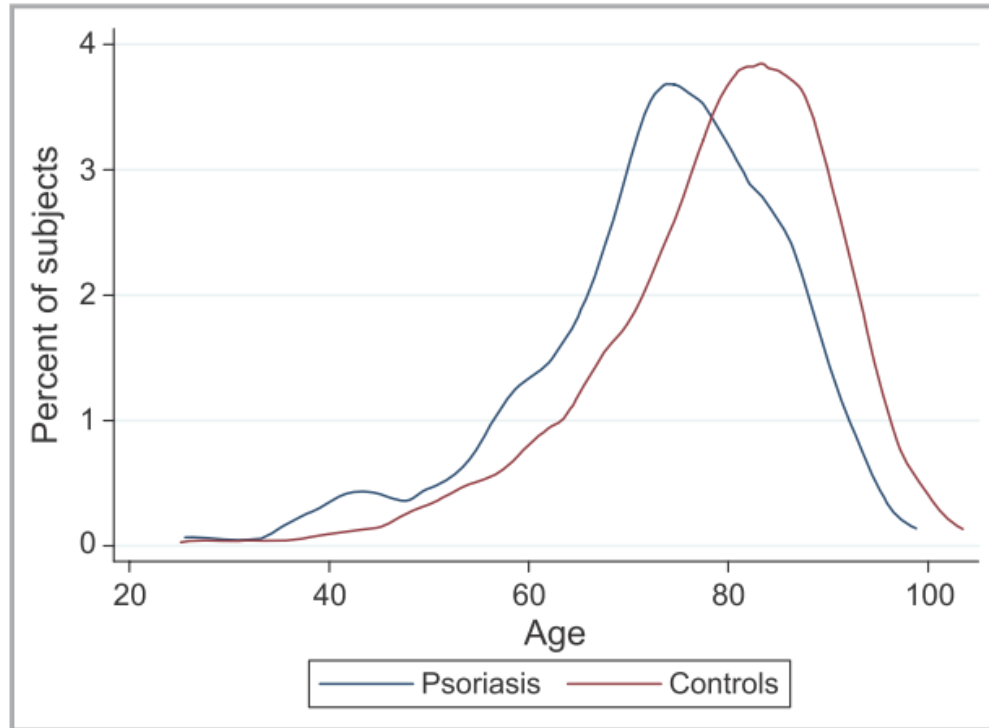
# Psoriasis og komorbiditet

---

- Psoriasis gigt
- Crohn's sygdom
- Forhøjet kolesterol
- Hypertension
- Overvægt
- Diabetes mellitus
- Livsstilsfaktorer
- Hjerte-kar sygdom
- Depression

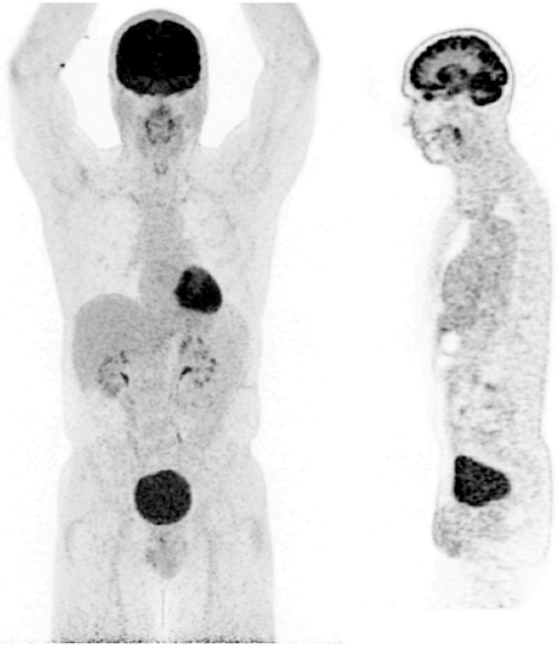
# ALDER VED DØD

---

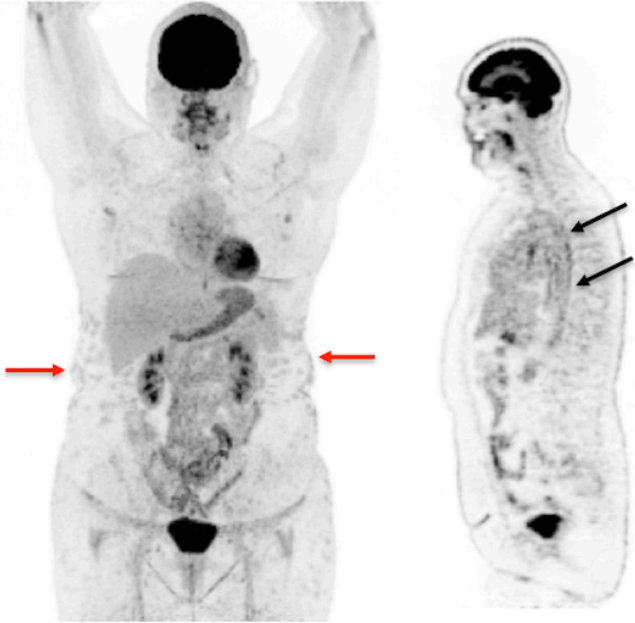


# General inflammation

CONTROL

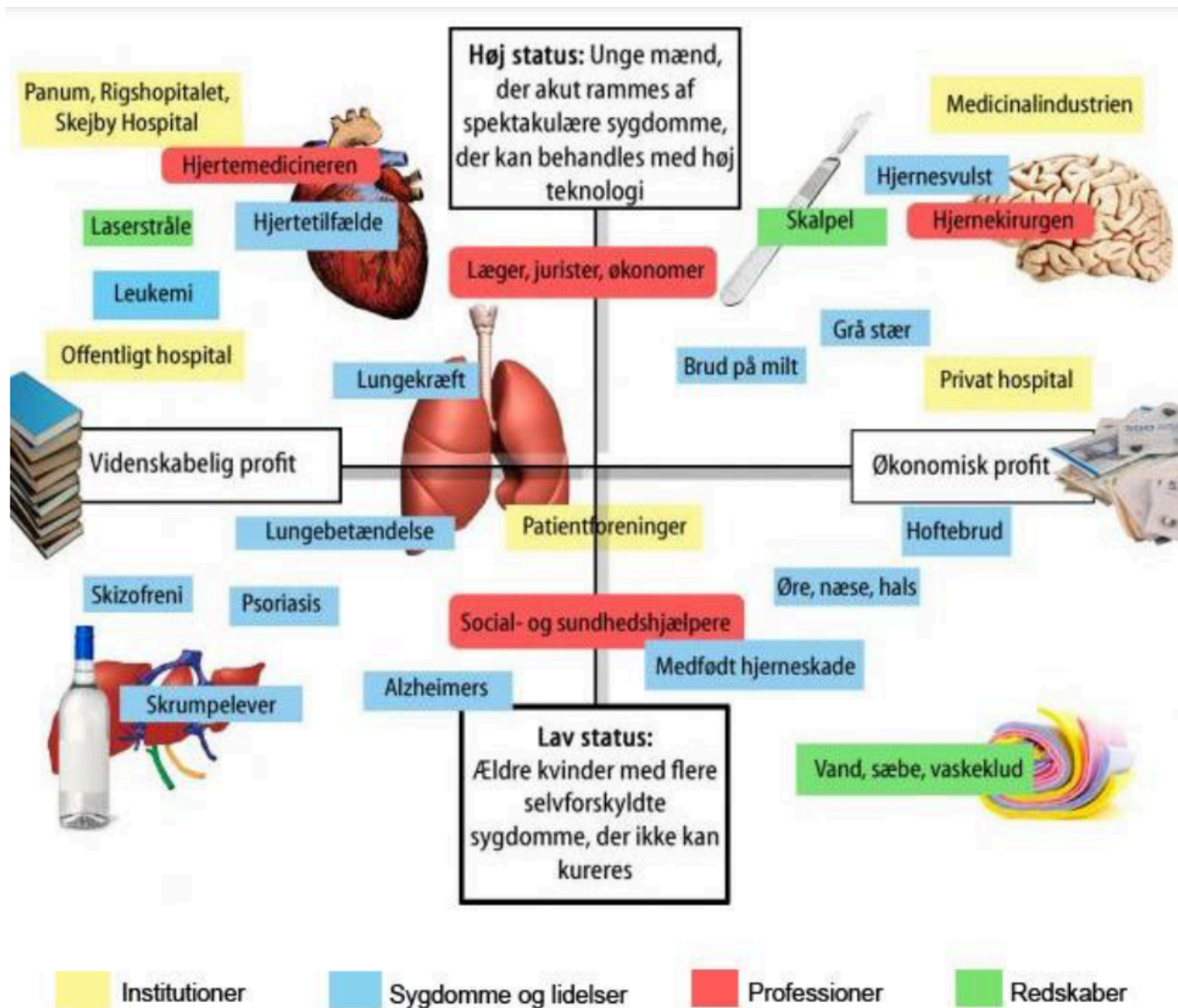


PSORIASIS



SUV





Principskitse over sygdommenes hierarki med inspiration fra Kristian Larsen. (Ill.: Colourbox og Anders Boas)

# The healthcare system



**Diagnosis**



**Treatment**



**Arsenic trioxide**



**Meeting the patients' needs**





# Common dilemmas for the patient and the doctor

---

**Chronic disease**

**Short consultations  
Expectation of cure**



# Common dilemmas for the patient and the doctor

---

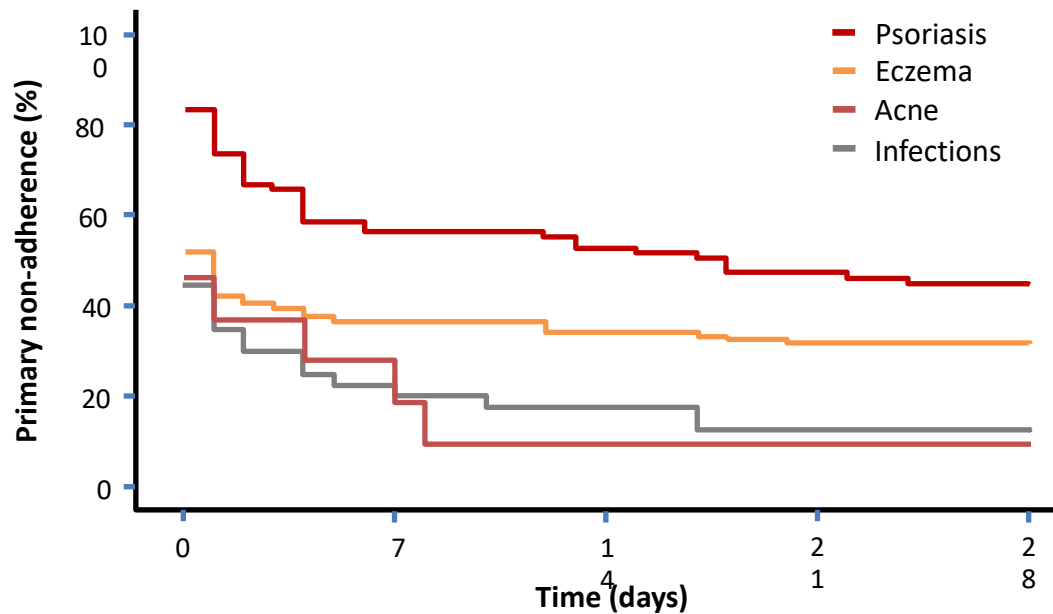
**Individualised treatment**  
**Focus on the patient**

**Guidelines and  
treatment algorithms**

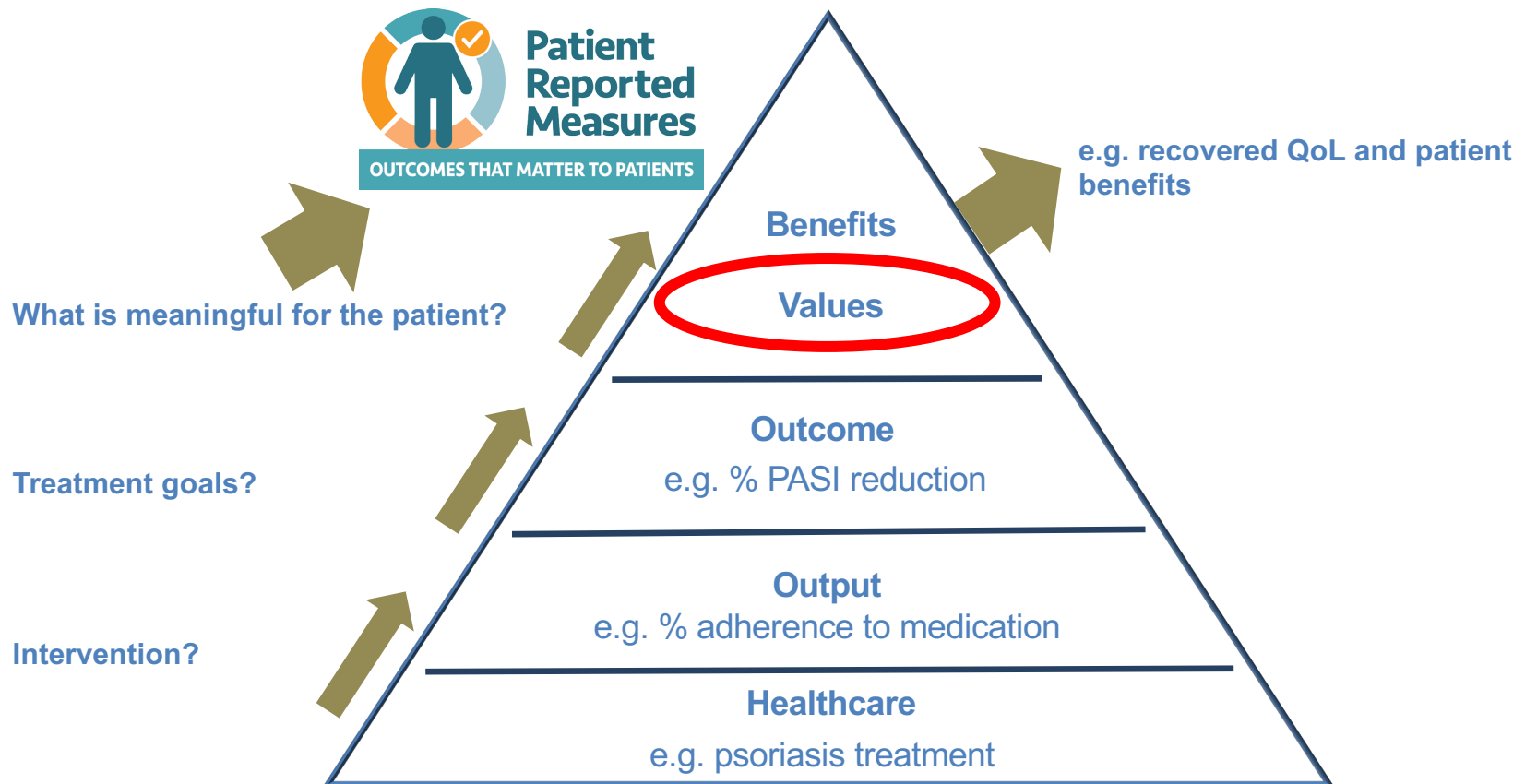


# Treatment adherence – a hint from the patients?

Prescription collection in patients with dermatological conditions



# Patient-centred care in dermatology



- PASI, Psoriasis Area Severity Index; QoL, quality of life.

# Det Nationale Center for Autoimmune Sygdomme på AUH



# Nationalt Center for Autoimmune Sygdomme

---

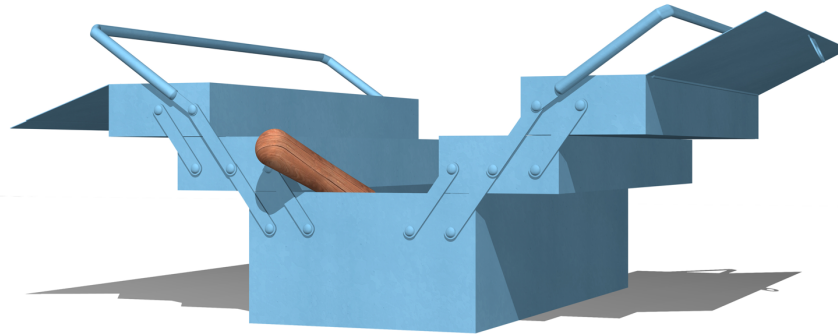


# Autoimmune sygdomme

---

**Kroniske sygdomme udvikler sig**

**En diagnose kommer sjældent alene**



# CONCLUSIONS

---

**Hvad er målsætningen med behandlingen af patienter med svær psoriasis?**



# CONCLUSIONS

---

**Hvad er målsætningen med behandlingen af patienter med svær psoriasis?**

- En individuel tilgang
- En mere holistisk orienteret tilgang
- En behandling som patienten forstår, accepterer og følger
- En effektiv behandling – og det har vi idag

**TAK!**